



THE COTSWOLD LETTING AGENCY

BETTER BY FAR



Directions

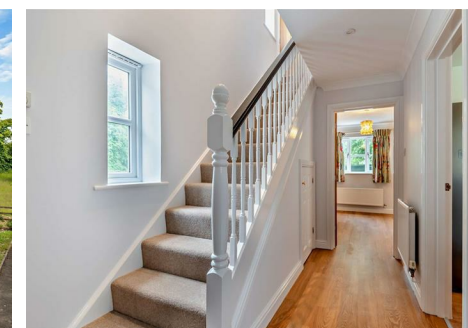
Viewings

Viewings by arrangement only. Call 01993 684572 to make an appointment.

EPC Rating

D

Energy Efficiency Rating		Current	Potential
Very energy efficient - lower running costs			
(92 plus) A			
(81-91) B			84
(69-80) C			
(55-68) D		64	
(39-54) E			
(21-38) F			
(1-20) G			
Not energy efficient - higher running costs			
England & Wales		EU Directive 2002/91/EC	



8 Sycamore Place Sycamore Place, Bradwell Village, OX18 4XG

£1,425 Per Month

- A charming development close to Burford
- Newly refurbished, 2-bedroom home
- Garage and allocated parking
- Stunning walks from your door
- Enclosed garden

8 Sycamore Place Sycamore Place, Bradwell Village

OV10 1VC

8 Sycamore Place is set within Bradwell Village, a charming development with access to beautiful Cotswold walks located just minutes from The Cotswolds Wildlife Park and 2 miles south of the market town of Burford ("The Gateway to the Cotswolds"). This offers delightful eateries, art galleries, boutiques and a thriving cultural scene and is itself located along the A40 providing great links to towns further afield such as Oxford, Cheltenham & Cirencester. 8 Sycamore place is available as a newly refurbished 2-bedroom home with a good-sized east facing garden and added benefit of a garage with parking in front. Rent excludes bills.



Council Tax Band: C

Property Information

Located in Bradwell Village a friendly and supportive community; 8 Sycamore Place is an ideal home for a small family, professional couple or single occupants looking to live in one of the most beautiful areas of the Cotswolds.

On entering the property 8 Sycamore Place provides a good size fully fitted kitchen, downstairs W/C, large open plan living space with French doors leading to the well maintained east facing garden and patio area. A perfect space to enjoy for those warmer spring and summer months. Two comfortable double bedrooms and newly fitted bathroom can be found on the first floor. The property also has the added benefit of a garage with parking in front.

The property is located in truly one of the most sort after areas; Burford notably one of the most picturesque villages just 2 miles away. With great links to a huge range of just as wonderfully picturesque villages such as Bibury, Bampton and many, many more! As well as larger towns such as Stow-on-the-Wold, Cheltenham, Cirencester and Oxford.

